



2018-2019

Annual Report

OUR LADY  OF GRACE
CATHOLIC CHURCH
EDINA

FROM THE PASTOR

Dear Parishioners,

God so loves us that he that he dwelt among us. God so loves us that he gave his only begotten son for our salvation. God so loves us that he invites us to call him "Abba! Father!" for, indeed, we are his children. But Jesus lived among us in way to show us how to serve each other, especially those in need and even those with whom we struggle - by His grace we can live justly with all.

The Annual Report represents how people within our parish give to the life and mission of our parish community - a community that exists for mission and ministry not only here but out in the world! Our campus is alive from five in the morning until ten at night with people celebrating Mass, participating in Bible studies and small groups, attending school or faith formation, celebrating a wedding or saying goodbye to a loved one at a funeral, with newborn parishioners to those over 100 (we have several). This community hums with love as you and countless visitors come here or encounter us wherever we happen to be coming to know just how much our God loves us all.

I am very grateful for the incredible service given in hundreds of ways and through thousands of hours of service, both here and throughout the greater community. This, accompanied by your commitment to financially support the mission of our parish and its ministries through your tithing, expresses faith in action.

Every fall we celebrate the Anointing of the Sick with some of our OLG School students assisting with a simple reception afterwards. It was just so cool seeing our 8th graders not only serving the seniors of our parish, but mingling with them, engaging in conversation.

If our service was simply service given for the sake of service, that would be enough. But as our 8th graders and seniors made abundantly clear, our service, tithe and, above all, prayer together builds and fosters relationships - even friendships.

As you read and prayerfully reflect on this Annual Report, allow it to speak to you and how you might give thanks, or how you and your family might continue to grow in your service and tithe support for the life and mission of Our Lady of Grace - making Jesus Christ known and loved.

God bless,



Father Kevin Finnegan
Pastor

WHO WE ARE



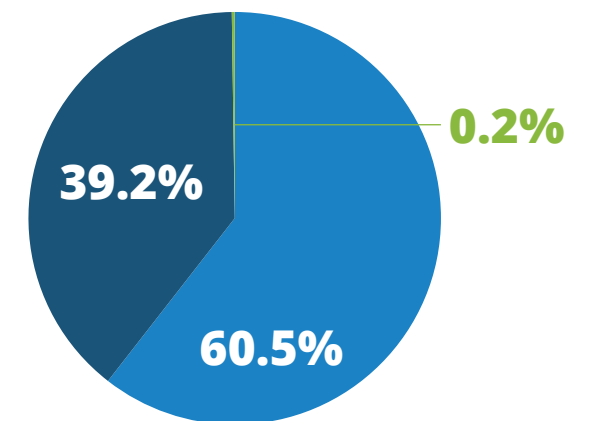
2,663
Households

8,308
Parishioners

36 Years Old
Overall Avg. Parishioner Age

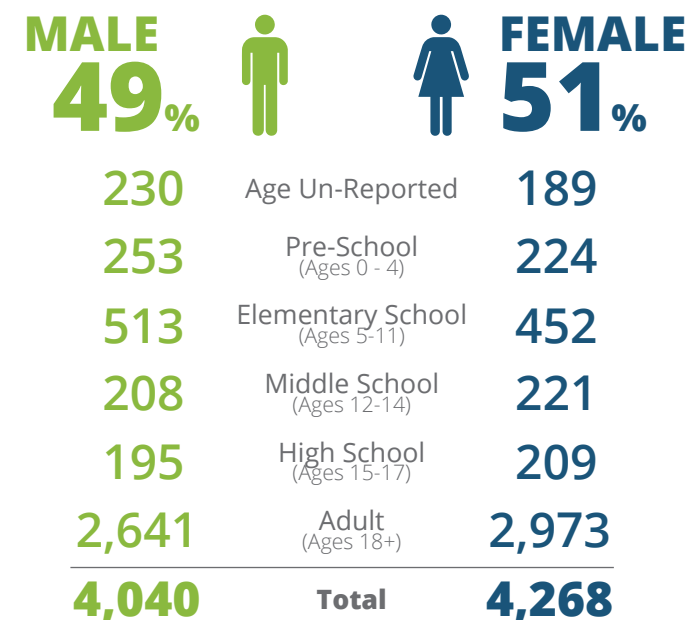
Marital Status

Parish Households



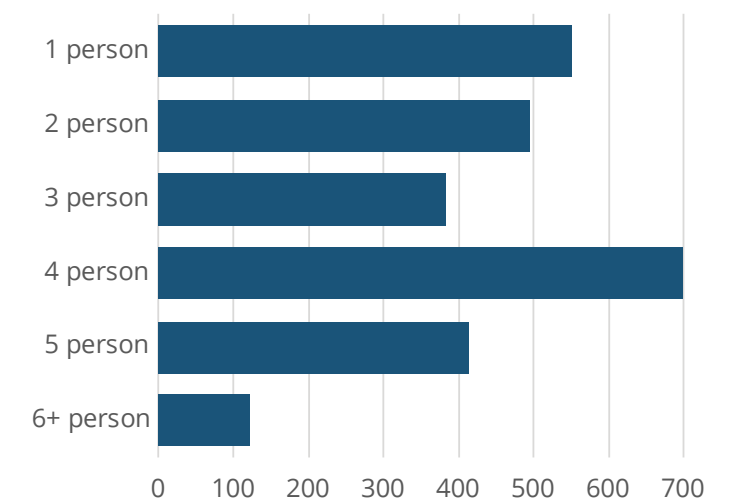
■ Married ■ Unmarried ■ Non-Reporting

% of Parishioners Who Are



Household Size

3.12
Avg. Parishioners Per Household



WORSHIP & PRAYER

"I am the Lord your God ... you shall not have other gods beside me." Exodus 20:2-3



Weekly Eucharistic Celebrations

2,000 Sunday Mass Attendees (average)
24% Parishioner Attendance at Sunday Masses (average)
150+ Daily Mass Attendees (average)
Weekly September - May School Mass / Prayer Services



Adoration

7,200 Hours of Adoration (committed)
4,500 Spontaneous Adoration Hours (estimated)
156 Hourly Adorers and Substitutes (committed)
180+ Hours of Adoration by OLG Students



Prayer Groups

24 Prayer groups, serving our OLG parishioners and others from the greater metro area, met to deepen their faith in God on the OLG campus. Even more met outside of the parish.



Funerals

41 People were remembered and their families supported through funeral services.



Liturgy

6,250+ Opportunities to serve at Sunday Mass and other liturgical celebrations, including:

*Sacristan
 Lector
 Eucharistic Minister of Holy Communion
 Choir / Cantor
 Usher*



HOSPITALITY

"For I was...a stranger, and you welcomed me." Matthew 25:35



New Members

145 Households welcomed as new members of Our Lady of Grace, helping us maintain steady growth



Meals

2,100+ Hours served in funeral hospitality.



Greeting

175+ Hours served in greeting and welcoming parishioners and guests before Mass.



Sparkle & Shine

272+ Hours dedicated by volunteers to keep our Church and Commons tidy.



Christmas Trees

950 Hours served engaging the community while selling 1,900+ Christmas trees.



Veterans

50 Veterans and their families honored during our Veteran's Day program.

14 OLG parishioners currently serving in the military.

DISCIPLESHIP: *A Venture in Faith...*

... a lifelong, intentional effort of formation and spiritual transformation of the heart to become witnesses to Christ.



138 Middle Schoolers

--- in Encounter and The Upper Room ---

30 Discipleship Group Leaders

38 Extreme Faith Campers

40 JPII Preparatory School Tutors

140 5th and 7th Grade NET Retreat Participants

226 3rd-5th Grade School Students

450 Families

--- in Faith Formation programming ---



205 VBS Participants
65 VBS Leaders

135 First Reconciliations and First Communions

214 K-2nd Grade School Students

65 Sunday School Students
16 Sunday School Leaders

107 Baptisms



"Jesus said to them, 'Come after me, and I will make you fishers of men.'" Mark 1:17

80 Upper Room Family Retreat Participants

214 6th-8th Grade School Students

113 Confirmations

45 Avg. High School LifeNight Participants

35 High Schoolers

--- in Peer Ministry ---



1,300+ Penitents

--- Seeking Reconciliation during Days of Mercy ---

"Go, therefore, and make disciples of all nations..."
Matthew 28:19-20



60 Acts 29 Adult Bible Study Participants

150 Men's Club Retreatants

15 Participants consecrated to Jesus through Mary

Many Received Anointing of the Sick

21 Young Adult Bible Study Participants

400+ Prayer Fair Attendees

40 Sacramental Marriages

16 Students for the Rite of Christian Initiation for Adults

--- Through the Profession of Faith ---

7 Entered the Church



*"For I was hungry and you gave me food,
I was thirsty and you gave me drink,
...naked and you clothed me,
ill and you cared for me,
in prison and you visited me."* Matthew 25:35-36

This map shows a few of the many places served:

16,450+ lbs of food donated to: STEP, VEAP, Basilica of St. Mary, Sabathani Community Center

20,058+ meals served at: Sharing and Caring Hands, Loaves and Fishes, and Feed My Starving Children

136 hours at Habitat for Humanity

600 personal gifts to: Haven Housing, Mary's Place, The Crisis Nursery, VEAP, Harriet Tubman Center, STEP, St. Stephen's Human Services

6 soccer teams outfitted in Honduras

3,348 clothing and personal items donated to: Sharing and Caring Hands, Coats for Kids, Simpson Housing and Haven Housing, Harriet Tubman Center, Sabathani Community Center

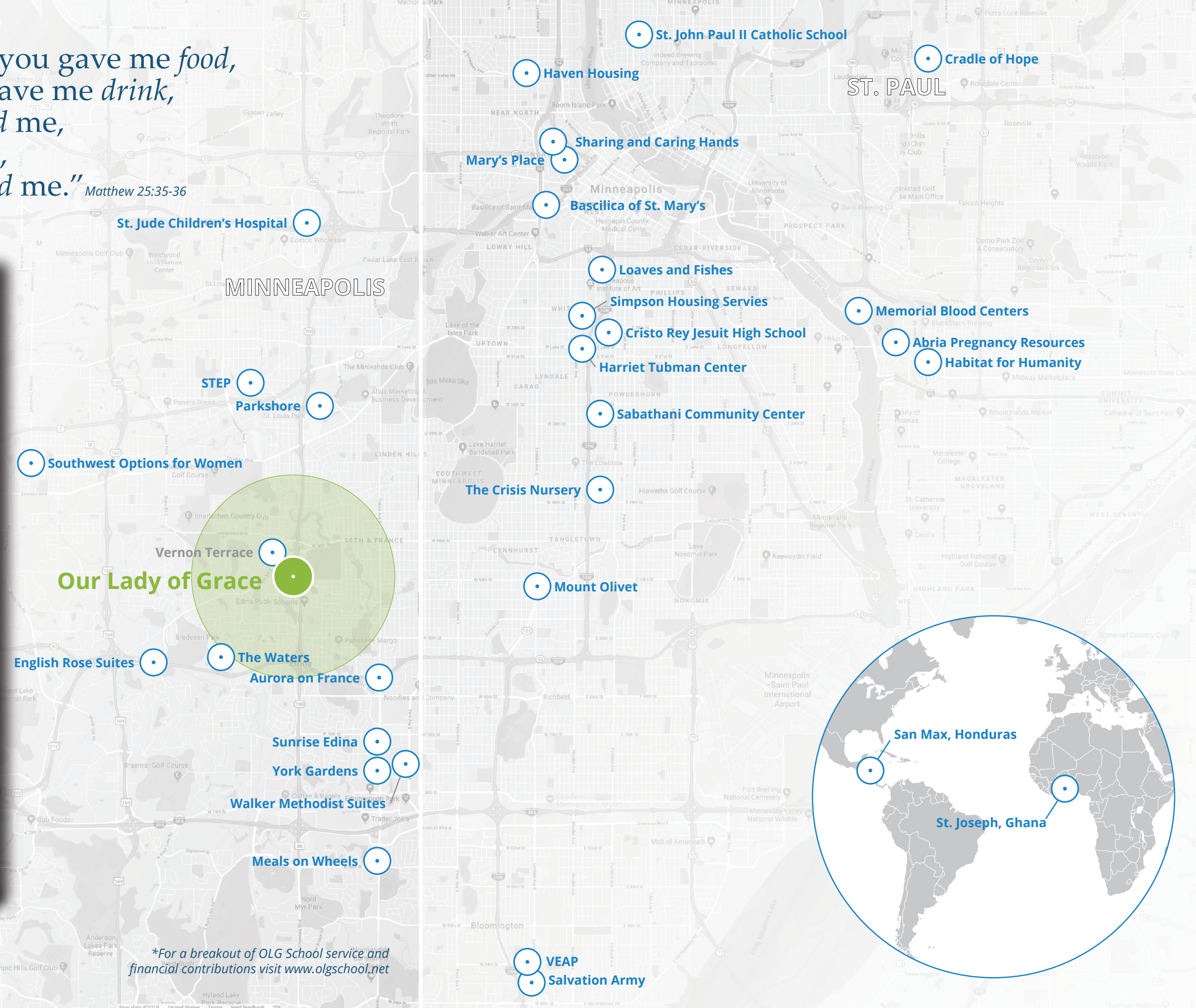
5,000+ hours of pastoral care provided to the homebound and those in need of one-to-one caring ministry

\$237,000+ given in support of John Paul II School, Cristo Rey Jesuit High School, our sisters parishes in Ghana and Honduras, St. Jude's Children's Research Hospital and Sponsor-a-Family programs

Countless baby supplies and event support to crisis pregnancy centers

\$225,000 in scholarships raised by the 2nd Annual Rise and Shine Breakfast for students at OLG school in Ghana.

Feed My Starving Children



**For a breakout of OLG School service and financial contributions visit www.olgschool.net*

FRUITS OF MINISTRY

“Eucharistic Adoration is my one reliable chance each week to find silence, to be alone with Jesus, and to ask Him to remind me of all that is good, true and beautiful in my life.” Karen L.

“It humbles me every time I’ve met with my care receivers over the years — I’m reminded that God has ‘faith’ in both me and Our Lady of Grace to perform corporal works this side of Heaven, and I relish the love and closeness these encounters provide all involved.” Margaret L.

“Like the Eucharist, sacred choral music at its best is a bridge between earth and Heaven which I have travelled many times. Sharing this with my church family at Mass is a calling that the Lord has rewarded with pure joy.” Eric N.

“Praying Lectio Divina with this group has changed my life. My relationship with the Lord has grown deeper and the bond between the people in the group is a wonderful and unexpected blessing.” Mary L.



Caiya and Evalena are two teens currently serving as catechists in one of our 4th grade classrooms. These two young ladies have journeyed in their faith formation with their mothers, Carin and Nancy, who are also catechists. These mothers model the tradition of the Church and the importance of faith in the family through their witness to teaching and passing on of the faith to their daughters.

We are grateful for the number of catechists and volunteers who come back every year to teach Our Lady of Grace faith formation. Currently 31 of our 44 catechists (including 10 youth) have previously served in other significant ways over the past several years, continuing their own venture in faith.

“My time at Extreme Faith Camp was unforgettable. I made many new friends, had a lot of fun playing sports and, most importantly, I grew up in my faith. I would definitely join Extreme Faith Camp again!”

Carson C. , OLG Student

GIVING ANALYSIS

This represents offertory giving only, including envelopes, EFT and online giving to the Stewardship Fund.

Profile

1,418

Total **Contributing** Households,



-165 from last year

53.25%

% of Total Households Contributing



-4.99% from last year

\$28.17

Average Weekly Contribution
Per Contributing Household



+\$3.48 over last year

\$1,464.61

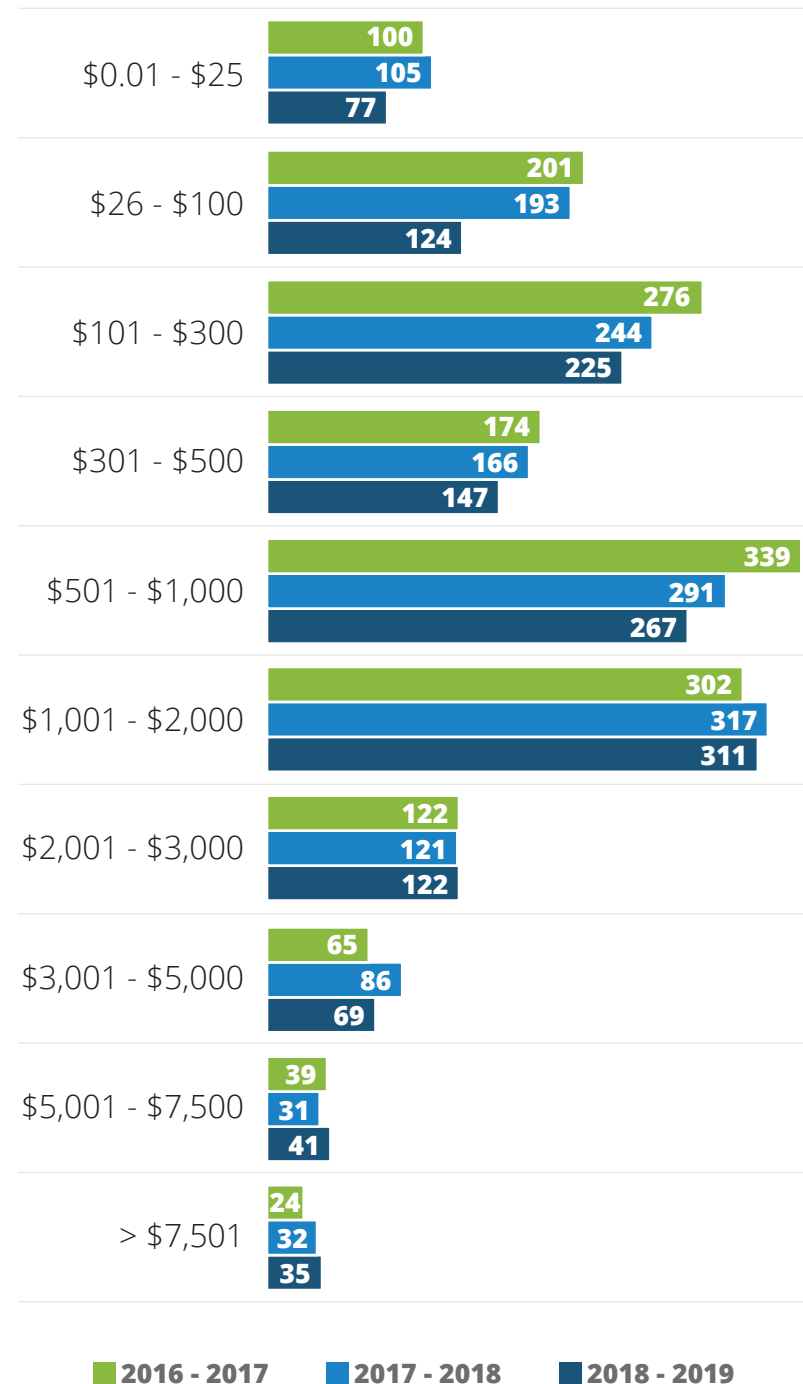
Average Annual Contribution
Per Contributing Household



+\$180.84 over last year

Annual Giving

of Contributing Households



FINANCIAL REPORT

Dear Friends,

We are pleased to present this annual report for Our Lady of Grace Parish on behalf of the Parish Finance Council and Board of Trustees, showing our financial and operating results for fiscal year ending June 30, 2019.

Fiscal year 2019 was a good year for Our Lady of Grace as the steady growth that we experienced in 2018 continued. The following results reflect what occurred for fiscal year (ending June 30, 2019).

From a financial results perspective, we were able to end fiscal year 2019 with a "Net Ordinary Income Surplus." The "Ordinary" income results are a reflection of how we manage our "day-to-day" operations. At a summary level, the revenues collected from all ministries were 5% better than our projected budget. We experienced a 2.2% increase in "collection revenue" over the budget and 3.3% increase over the previous year's collections. It is this "collection" revenue that funds many of our ministries and pays for the day-to-day operating expenses of the parish. We are very thankful for your continued financial support and we are hopeful that we can continue this positive trend. The "ordinary" net operating results showed a "surplus" against the fiscal year budget.

In addition to a surplus in the "day-to-day", "Ordinary" financial performance of the parish and school, we are also able to report a surplus in "Net Income" after "Other" income and expenses. Included in the "Other" income and expenses are items like gains and losses on our parish investment accounts held at Catholic Community Foundation (CCF) and any special gifts we received over the course of the fiscal year as well. As we restarted the "priests' residence" and "Advancing Our Mission" campaign, we received over \$1MM in contributions to those initiatives. In fiscal year 18-19, the parish renovated the music room (\$300K) to make it more accessible to the parish and the school. This renovation included adding a "lift" to ensure accessibility to this beautiful space for our parishioners, students and guests with physical impairments. As previously communicated, parish leadership made the decision to participate in the archdiocesan bankruptcy by contributing a significant monetary amount to the settlement. Other parishes participated as well.

As we indicated in previous years, we have spent considerable time and energy growing our three endowments (School, Parish, and Cassidy). The endowments are very important to the long-term financial future of our parish and school. We were blessed to receive gifts to the endowments that went directly into the endowment funds at Catholic Community Foundation (CCF). In addition to these outright gifts, the investment market(s) performed well and our endowments performance "mirrored" the overall performance of the markets.

The beautiful mission statement of Our Lady of Grace is: "To Make Jesus Christ known and loved" and this mission cannot be lived out without first understanding at a deep and personal level, that everything we have is a gift from God, and as such we should try to express our gratitude to God for those gifts. We are so grateful to the parishioners of Our Lady of Grace who demonstrate a consistent commitment to God and Our Lady of Grace through gifts of their prayer, service, and tithe.

In closing we remain committed to operating the finances of our parish in a "balanced" way so as to maintain your trust. We ask you to recommit yourselves to this beautiful faith community as well. Please prayerfully consider making a new financial commitment or increasing your financial commitment to allow us to continue to build a bright, Christ-filled future for Our Lady of Grace and for all those we serve. Please help us continue to live our parish mission: "To Make Jesus Christ known and loved." We depend on your committed financial support.



Your brother in Christ,

Jeff Hansen
Finance Council Chair



In Christ's Love

Dcn. Bob Durham
Business Administrator

INCOME STATEMENT

Ordinary Income - General Operations

Account Description	FY 19-20 Budget	FY 18-19 Actual	FY 17-18 Actual
Total General Operations	\$ 3,021,300.00	2,949,398.50	2,862,521.68
Total Rectory	\$ 12,000.00	12,000.00	13,000.00
Total Parish Outreach	\$ 36,122.00	22,020.00	36,122.00
Total Youth Formation	\$ 35,000.00	33,975.00	41,130.00
Total Sacramental Preparation	\$ 22,410.00	21,755.00	20,055.00
Total Elementary School	\$ 4,030,375.99	4,187,663.42	4,269,465.06
Total Child Care	\$ 348,461.00	325,185.46	326,804.57
Total Athletics	\$ 54,395.00	52,523.50	53,440.00
Total Ordinary Income	\$ 7,560,063.99	7,604,520.88	7,622,538.31

Ordinary Expense - General Operations

Account Description	FY 19-20 Budget	FY 18-19 Actual	FY 17-18 Actual
Total General Operations	\$ 7,500.00	382.00	10,256.00
Total Business Office	\$ 1,084,420.28	959,765.69	880,851.70
Total Grounds/Plant	\$ 766,191.04	746,171.14	706,079.89
Total Rectory Building	\$ 30,648.00	30,595.69	73,942.24
Total Liturgy	\$ 105,169.28	99,685.89	101,384.86
Total Music	\$ 124,609.04	119,226.73	112,700.88
Total Clergy Services	\$ 167,845.96	160,408.65	166,192.65
Total Pastoral Care	\$ 114,391.00	107,394.38	103,222.34
Total Parish Outreach	\$ 57,775.96	39,214.90	47,668.87
Total Social Justice	\$ 94,977.04	74,877.99	81,438.18
Total Youth Formation	\$ 285,413.48	261,676.77	250,296.01
Total Youth Ministry	\$ 132,463.96	127,834.08	123,163.42
Total Sacramental Prep	\$ 39,265.00	24,279.25	28,166.65
Total Adult Formation	\$ 103,511.43	23,372.80	16,395.66
Total Elementary School	\$ 4,158,758.71	4,240,001.51	4,183,949.74
Total Childcare	\$ 226,565.95	208,470.55	206,280.50
Total Athletics	\$ 42,267.00	47,488.29	48,880.88
Total Ordinary Expense	\$ 7,541,773.13	7,270,846.31	7,140,870.47
TOTAL: ORDINARY Income / (Loss)	\$ 18,290.86	333,674.57	481,667.84

Other Income

Account Description	FY 19-20 Budget	FY 18-19 Actual	FY 17-18 Actual
Total Other Income	\$ -	1,591,691.99	804,689.38
Total Other Expense	\$ -	981,385.52	462,263.12
TOTAL OTHER Income / (loss)	\$ -	610,306.47	342,426.26

NET Income / Loss	\$ 18,290.86	943,981.04	824,094.10
--------------------------	---------------------	-------------------	-------------------

ENSURING OUR TRADITIONS FOR FUTURE GENERATIONS

We have 3 permanent endowment options for ensuring our mission will continue to benefit from all that we have created throughout the history of our great parish. The combined market value on June 30, 2019 was \$5,328,030. The parish endowments are "beneficiary," and permanently held and invested with the Catholic Community Foundation (CCF) in the United States. Created in 1992 as a legal entity, the Foundation operates independently. Our endowment funds are professionally invested and protected from any liabilities of the parish, the Archdiocese and all other Catholic entities.

Parish Endowment Fund

The Parish Endowment financially benefits the mission of Our Lady of Grace Catholic Church and its religious, charitable and educational ministries.

	FY 18-19	FY 17-18
Beginning Balance	\$ 1,130,066.39	989,906.89
Transfers		
Deposits	\$ 33,860.14	(82,362.37)
Grants	\$ (34,000.00)	(32,100.00)
Fees	\$ (4,990.03)	(4,198.47)
Gain (Loss)-Market	\$ 53,244.04	84,095.60
Ending Balance	\$ 1,178,180.54	1,130,066.39

School Endowment Fund

The School Endowment exclusively benefits the mission, programs and operations of Our Lady of Grace Catholic School, ensuring that the School remains viable for future generations.

	FY 18-19	FY 17-18
Beginning Balance	\$ 3,605,598.93	3,362,278.01
Transfers		
Deposits	\$ 29,743.03	20,793.89
Grants	\$ (98,300.00)	(77,200.00)
Fees	\$ (15,889.08)	(15,635.37)
Gain (Loss)-Market	\$ 168,780.17	315,362.40
Ending Balance	\$ 3,689,933.05	3,605,598.93

Robert T. Cassidy Endowment Fund

Fr. Robert T. Cassidy served as pastor of Our Lady of Grace from 1985 to 2002. The Robert T. Cassidy Endowment helps Our Lady of Grace offer financial aid to families in need to attend Our Lady of Grace School.

	FY 18-19	FY 17-18
Beginning Balance	\$ 443,211.30	409,238.38
Transfers		
Deposits	\$ 13,158.18	12,498.33
Grants	\$ (15,600.00)	(14,800.00)
Fees	\$ (1,964.10)	(1,911.99)
Gain (Loss)-Market	\$ 21,111.90	38,188.58
Ending Balance	\$ 459,917.28	443,221.30

Please contact Jon Cassidy, Director of Advancement, in the Parish Office (x9054) for more information or to make a gift.